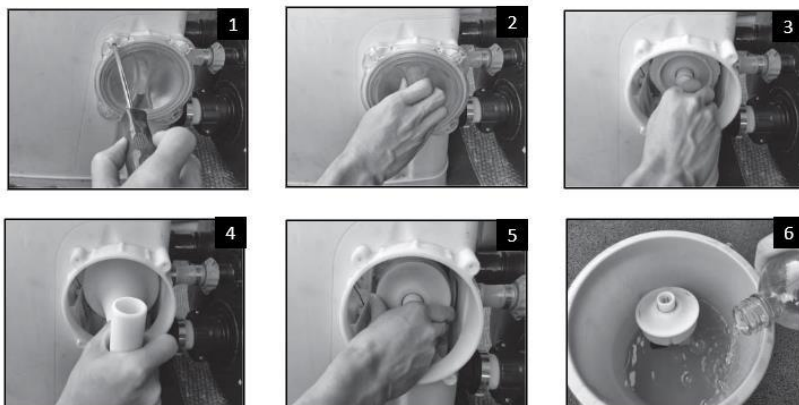


Cleaning the electrolytic cell For PureSpa Jet&Bubble Deluxe

To keep the electrode functioning optimally, it is necessary to clean it manually at regular intervals. You can clean the electrode according to the step-by-step plan below.

- Step 1:** Switch off the pump and remove the plug from the wall socket
- Step 2:** Unscrew the filter housing from the spa tub and use the plugs provided to cover the inlet and outlet to prevent draining
- Step 3:** Remove the four screws from the transparent cover using a crosshead screwdriver and take it off (See figure 1 and 2)
- Step 4:** Unplug the electrolytic cell. Unscrew the nut of the electrolytic cell anti-clockwise using the supplied tool (See figure 3 and 4)
- Step 5:** Remove the electrolytic cell and place it in a container and pour in cleaning vinegar until the electrode is submerged
- Step 6:** Place the titanium electrode in a container and pour cleaning vinegar until the titanium electrode is submerged. Let the plates soak for at least 1 hour. For severe deposits, an overnight soak is recommended. Rinse the electrode under the tap or with a garden hose. (See figure 5 and 6)
- Step 7:** Follow the above steps in reverse order to replace the electrolyt



For more information, visit the INTEX customer support portal
www.intexsupport.com