

## White fold lines on the spa tub

---

The spa tub is made from soft PVC material. The white lines visible are not damages. A damaged spot would not be white because the PVC material is all black/brown and only turns white when it gets cold. A damaged spot would also be straight and not follow the relief like the white folds.

These fold lines are caused by cold from transport, for example. When the PVC material gets cold, the material turns from black/brown to white. This turns back to its original colour when the PVC material is heated. Below is a step-by-step plan to speed up this process.

- Step 1:** Inflate the spa tub as mentioned in the user manual
- Step 2:** Set a hair dryer on the highest/hottest setting
- Step 3:** Hold the hair dryer at a 45° angle, close to the white line  
It will not work if the hair dryer is aimed perpendicular to the wall

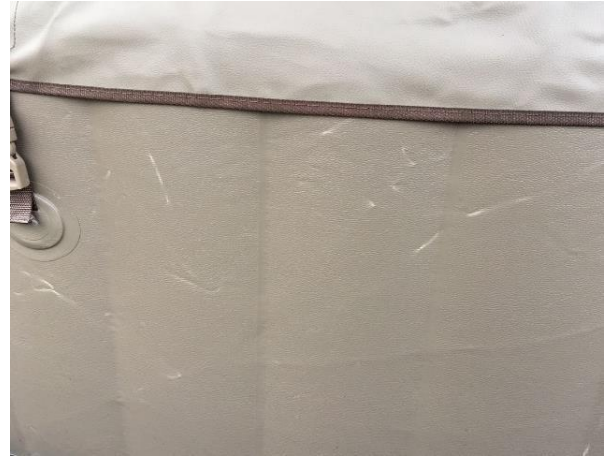
You will notice that the PVC material softens and the white fold line will disappear.



**Alternative procedure:** Fill the mug with hot water (80 °C). Place the rim of the mug against the tub directly above the white line. Slowly pour water over the white line for 10 seconds. If you pour water over a larger area at once, this method will not work because there is too much heat loss

## White fold lines on the spa tub

---



The fold lines will also go away naturally over time as the spa tub is inflated and the ambient temperature rises. The PVC material will warm up and slowly take on its original colour.



For more information, visit the INTEX customer support portal  
[www.intexsupport.com](http://www.intexsupport.com)