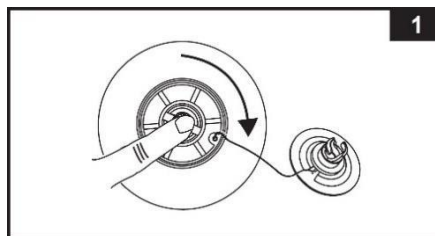


## Checking pressure release valve

The pressure release valve may not be closed or tightened correctly. Please follow the steps below to see if this solves the problem.

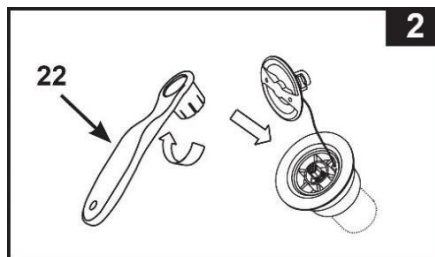
### Closing the pressure release valve

Unscrew the valve cap of the pressure release valve. Push in the middle of the valve and turn it 90 degrees clockwise (**see image 1**). This closes the valve.



### Close the pressure release valve

Open the valve cap and place the spa key in the valve (**see image 2**). Turn the key (**item 22**) clockwise to tighten the valve.



**IMPORTANT:** Never loosen or tighten the valve if there is water in the spa. Only use the supplied spa key to tighten the air valve. Do not tighten it too tight as this could result in a damaged valve.



For more information, visit the INTEX customer support portal  
[www.intexsupport.com](http://www.intexsupport.com)