

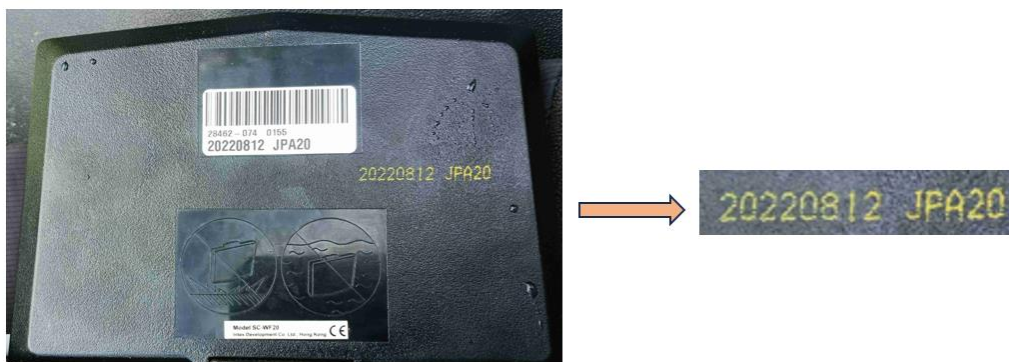
Two Apps – Choose the correct one

In case you are owner of INTEX spa with remote control via app, you first need to check which spa model (rep. which type of control panel) you keep. Based on model type you have to select correct app version for download.

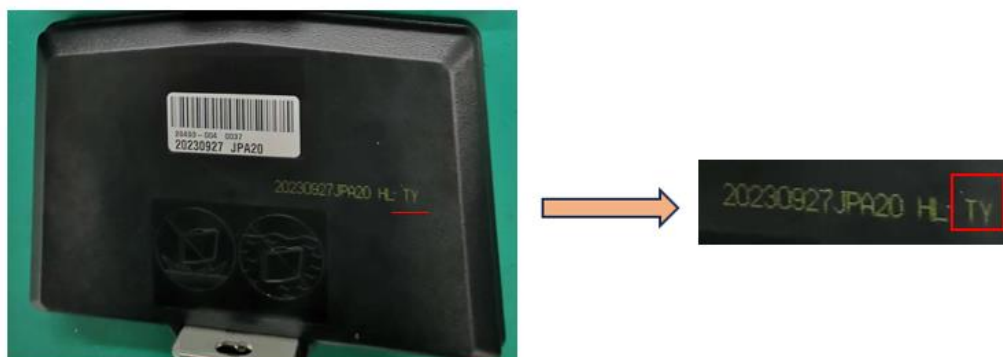
Procedure:

Take the control panel in hand, check the backside of the panel and see which code is printed on it – see pictures below:

- ✓ The code **doesn't contain** capital letters „TY“ - connect the spa with help of app nr. **1**.



- ✓ The **code ends with** capital letters „TY“ – connect the app with help of app nr. **2**.



Two Apps – Choose the correct one

App for IOS system:

- ✓ App **INTEX Link – Spa Management** (app keeps dark background)
- ✓ App **INTEX Link (NEW)** (app keeps light background)

App for Android system:

- ✓ App **INTEX Link – Spa Management (Intex Development Co Ltd)** (app keeps dark background)
- ✓ **Aplikace INTEX Link (Intex Development Co Ltd)** (app keeps light background)

Important: the panel must be fully loaded and protective foil must be removed from the screen of the panel before the pairing start.



Old App Icon



New App Icon



For more information, visit the INTEX customer support portal
www.intexsupport.com