

Hoses, connecting the pool to filtration systems, hose adapters, skimmer connection

INTEX pool hoses have inner diameter of 32 mm or 38 mm.

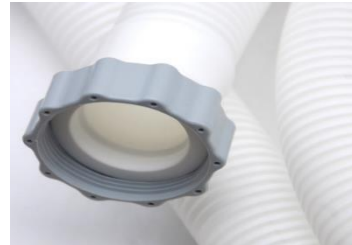
Hose No. 10399

- ✓ Inner diameter of the hose 32 mm
- ✓ Hose length approx. 300 cm



Hose No. 11010

- ✓ Inner diameter of the hose 38 mm
- ✓ Outer diameter of the hose 48 mm
- ✓ Outer diameter of the sleeve at fitting 55 mm
- ✓ Inner diameter of the sleeve at fitting 57 mm
- ✓ On both ends of fitting 2 "
- ✓ Hose length approx. 300 cm



INTEX pools with wall ports for INTEX hoses with inner diameter of 32 mm are as follows:

- ✓ all INTEX pools with size of 488 cm (16´) and smaller except ULTRA XTR/ Clearview Prism/ Chevron Prism pools with size of 488 cm (16´)
- ✓ all ULTRA XTR pools smaller than 488 cm (16´)

INTEX®

Hoses, connecting the pool to filtration systems, hose adapters, skimmer connection

INTEX pools with wall ports for INTEX hoses with inner diameter of 38 mm are as follows:

- ✔ all ULTRA XTR/ Clearview Prism/ Chevron Prism pools with size of 488 cm (16´) and larger
- ✔ all other INTEX pools larger than 488 cm (16´)

	INTEX HOSE WITH INNER DIAMETER OF 32 MM	INTEX HOSE WITH INNER DIAMETER OF 38 MM
Pool ports	all INTEX pools up to and including 488 cm (16´) in size, except for the ULTRA XTR pool	all INTEX pools larger than 488 cm (16´) and all ULTRA XTR pools, including the 488 cm (16´) size
Cartridge filter pumps	C330, C530/C600, C900/C1000	C1500, C2500
Sand filter pump	SX 925	SX 1500, SX 2100, SX 2800, SX 3000/SX 3200
Sand filter pumps with saltwater systems		QX2100, QX2600
Saltwater systems	QS 200, QS 400	QS 500, QS 700 PLUS, QS 1200, QZ 1100
Electric heater	28684	
Solar heater	28685 (adaptors A and B included)	

Hoses, connecting the pool to filtration systems, hose adapters, skimmer connection

CONNECTING THE INTEX POOL TO INTEX FILTRATION SYSTEM

SELECTING A VARIANT	CONNECTION PARTS THAT NEED TO BE PURCHASED
Any INTEX filtration system purchased in a set with an INTEX pool	The connection parts for the filtration system to the pool are included, no need to purchase any other parts.
Separately purchased INTEX CARTRIDGE filter pump with hoses with inner diameter of 32 mm + separately purchased INTEX pool with wall ports for hoses with inner diameter of 32 mm	The connection parts for the filtration system to the pool are included, no need to purchase any other parts.
Separately purchased INTEX CARTRIDGE filter pump with hoses with inner diameter of 32 mm + separately purchased INTEX pool with wall ports for hoses with inner diameter of 38 mm	You need to purchase 1× 26004 + 2× 10849
Separately purchased INTEX CARTRIDGE filter pump with hoses with inner diameter of 38 mm + separately purchased INTEX pool with wall ports for hoses with inner diameter of 32 mm	You need to purchase 25023
Separately purchased INTEX CARTRIDGE filter system with hoses with inner diameter of 38 mm and SYSTEM FLOW RATE of 4 to 7.2 m ³ /hour (1050 to 1900 gallons/hour) + separately purchased INTEX pool with wall ports for hoses with inner diameter of 38 mm	You need to purchase 26004
Separately purchased INTEX CARTRIDGE filter system with hoses with inner diameter of 38 mm and SYSTEM FLOW RATE of 7.2 to 9.2 m ³ /hour (1900 to 2450 gallons/hour) + separately purchased INTEX pool with wall ports for hoses with inner diameter of 38 mm	You need to purchase 26005
S Separately purchased INTEX SAND filter pump with hoses with inner diameter of 32 mm + separately purchased INTEX pool with wall ports for hoses with inner diameter of 32 mm	The connection parts for the filtration system to the pool are included, no need to purchase any other parts.
Separately purchased INTEX SAND filter pump with hoses with inner diameter of 32 mm + separately purchased INTEX pool with wall ports for hoses with inner diameter of 38 mm	You need to purchase 1× 26004 + 2× 10849
Separately purchased INTEX SAND filter pump with hoses with inner diameter of 38 mm + separately purchased INTEX pool with wall ports for hoses with inner diameter of 32 mm	You need to purchase 25023
Separately purchased INTEX SAND filter pump with hoses with inner diameter of 38 mm and SYSTEM FLOW RATE of 4 to 7.2 m ³ /hour (1050 to 1900 gallons/hour)	You need to purchase 26004

Hoses, connecting the pool to filtration systems, hose adapters, skimmer connection

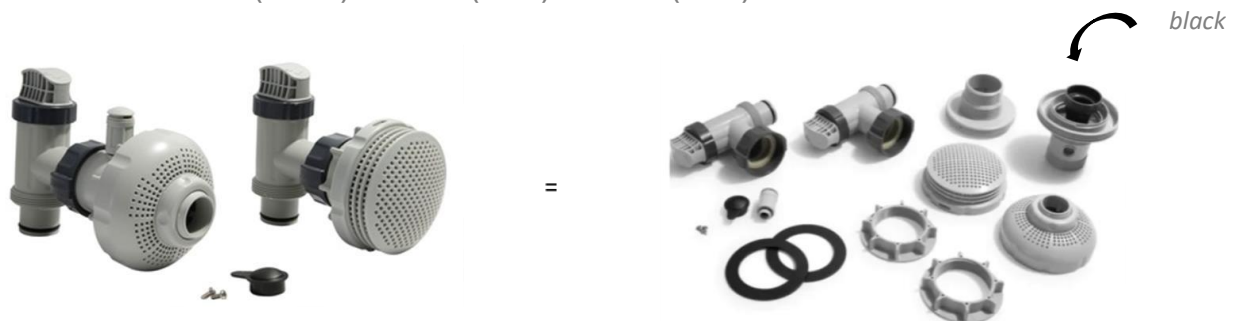
+ separately purchased INTEX pool with wall ports for hoses with inner diameter of 38 mm	
Separately purchased INTEX SAND filter pump with hoses with inner diameter of 38 mm and SYSTEM FLOW RATE of 7.2 to 9.2 m3/hour (1900 to 2450 gallons/hour) + separately purchased INTEX pool with wall ports for hoses with inner diameter of 38 mm	You need to purchase 26005

OVERVIEW OF CONNECTION PARTS

INTEX 25023 = 12353 (1 PC) + 10722 (2 PCS) + 11070 (1 PC) + 12197 (1 PC)



INTEX 26004 = 10747 (2 PCS) + 11236 (1 PC) + 12354 (1 PC)



Hoses, connecting the pool to filtration systems, hose adapters, skimmer connection

INTEX 26005 = 10747 (2 PCS) + 11236 (1 PC) + 12355 (1 PC)



Hoses, connecting the pool to filtration systems, hose adapters, skimmer connection

Hose Adapter No. 10849 ("Adapter A")

If you have an INTEX pool with hose inlets with inner diameter of 38 mm or other INTEX accessories with hoses with inner diameter of 38 mm and need to connect them to an INTEX hose with inner diameter of 32 mm, use this adapter A (No. 10849).



Hose Adapter No. 10722 ("Adapter B")

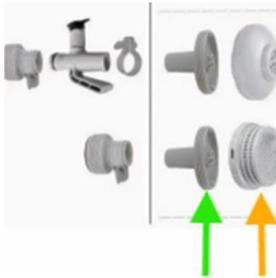
If you have an INTEX pool with hose inlets with inner diameter of 32 mm or other INTEX accessories with hoses with inner diameter of 32 mm and need to connect them to an INTEX hose with inner diameter of 38 mm, use this adapter B (No. 10722).

SKIMMER

The Deluxe skimmer pack includes hose adapter 11238A which can be screwed onto both 32 mm and 38 mm pool hose ports. Screw the adapter 11238A onto the inlet port, from which the water flows through the skimmer into the filtration.



Hoses, connecting the pool to filtration systems, hose adapters, skimmer connection



For INTEX pools with hoses with inner diameter of 32 mm, unscrew the strainer on the inlet port (orange arrow) and screw the hose adapter 11238A onto the port (green arrow).

For INTEX pools with hoses with inner diameter of 38 mm, unscrew the strainer on the inlet port (orange arrow) and screw the hose adapter 11238A onto the port (green arrow) instead of the strainer.



For more information, visit the INTEX customer support portal
www.intexsupport.com